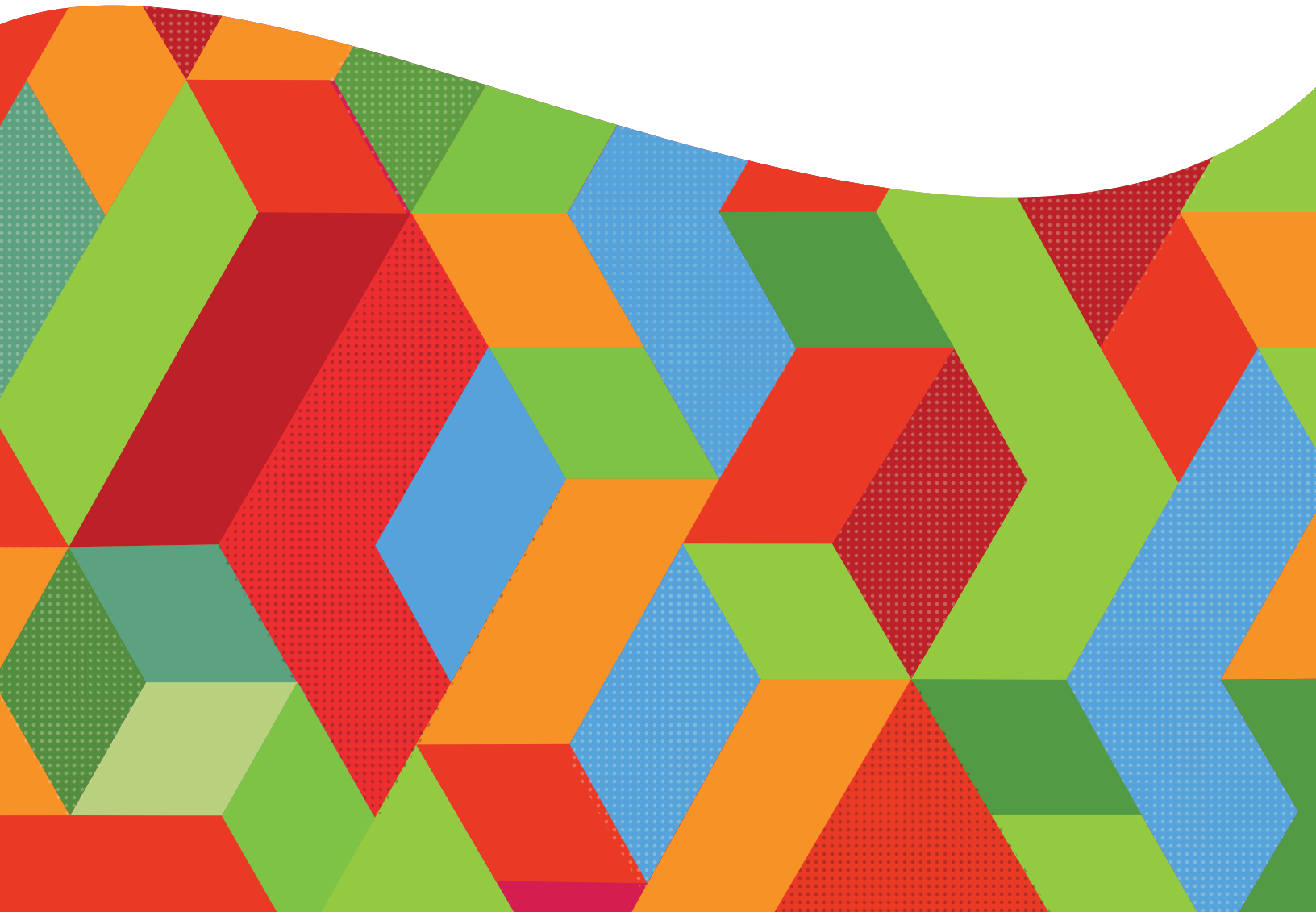


ANNUAL IMPACT REPORT



COLOR *me*
SAFESM
FOUNDATION

2025



LETTER FROM THE FOUNDER



Gauthami Vemula-Queijo

Dear Supporters & Friends,

As we reflect on 2025, I am filled with deep gratitude in the work we are building together. What began as a focused effort to support families navigating child welfare challenges continues to expand in reach, depth, and community impact. In a year marked by uncertainty for many families, we remained steady and intentional in our approach. Growth for us is not measured solely by numbers (and by that measure, we almost doubled our reach from 2024), but by the depth of support provided, the quality time invested, the trust built with each family, and the community spaces we continue to strengthen. This year was about deepening our commitment to supporting families as the foundation of stability, recognizing that when families are strengthened, the whole child is protected and empowered.

At **Color me SAFE Foundation (CMSF)**, we believe child welfare is not only about responding to crises, but also about strengthening families, building emotional safety, increasing awareness, and creating prevention pathways before challenges escalate.

In late 2025, we deepened our direct family support by launching legal consultation services for families navigating crises. As we worked closely with families, we recognized a significant gap. Many did not have the financial means to consult with a family law attorney, which often compounded existing stress and uncertainty. By providing access to legal consultations, we are helping reduce that financial strain while equipping families with informed guidance during critical moments. This new layer of support strengthens our commitment to offering practical, responsive resources that help stabilize families when it matters most.



Our **SAFE Spaces** initiative continued to grow, with an increase in cities reached from 3 to 9 and expanded community participation reaching 201 participants in 2025 (vs. 129 in 2024). Through intentional collaborations with fellow nonprofits, we amplified our impact locally. Most notably, **SAFE Spaces** traveled across the ocean as Ask Auntie was implemented in Uganda through our trained facilitator, demonstrating that the need for prevention-focused support transcends borders.

We strengthened our presence through community outreach and tabling events, connecting directly with families and increasing awareness before crises escalate. At the same time, we invested strategically in developing our Community Education & Awareness framework, building a scalable model designed to reach families earlier and more effectively.

2025 strengthened our foundation. In the year ahead, we are focused on expanding **SAFE Spaces**, scaling our educational initiatives, and deepening strategic partnerships so we can reach even more families with clarity and care.

This progress would not be possible without you. To our donors, volunteers, partners, board members, and advocates, thank you for trusting us with this mission and standing beside families in moments that matter most. Together, we are strengthening families, creating safer environments, and supporting the whole child, preventing and mitigating child and family crises.

With heartfelt gratitude, 

Gauthami Vemula-Queijo
Founder



TABLE OF CONTENTS

COLOR ME SAFE FOUNDATION 5

Our Mission & Vision 5

OUR PROGRAMS 7

Overview 7

Direct Family Services 8

Education & Community Awareness 9

Safe Spaces 10

Safe Spaces Across the Globe 11

A Family's Story : The Human Side of our Work 12

NEW THIS YEAR 14

OUR PEOPLE 15

Our Board of Directors 15

Direct Family Services Team and Internal Operations 16

Our Dedicated Volunteers 16

Our Community Partners 18

FINANCIAL STEWARDSHIP 19

LOOKING FORWARD: 2026 AND BEYOND 24



**EMPOWER.
EDUCATE.
ADVOCATE.**

OUR MISSION

Our mission is to EMPOWER families, regardless of background or economic means by providing, guidance, solutions, and education related to child welfare.

OUR VISION

Our vision is a world where no family has to face a child welfare crisis without support, independently of their economic means.

CORE VALUES

EMPATHY

We listen deeply and seek to understand the lived experiences of children and families without judgment, approaching every individual with compassion, dignity, and humanity.

EQUITY

We believe every child and family deserves fairness, access, and equal opportunity for safety, stability, and support, regardless of background or economic means.

ADVOCACY AND PROTECTION

We stand beside families with courage and conviction, advocating for their rights and protecting the safety, well-being, and stability of children and families.

INTEGRITY AND STEWARDSHIP

We uphold honesty, ethical practices, transparency, and responsible leadership, ensuring trust and accountability in all that we do.

HOW WE CREATE IMPACT

Color me **SAFE** Foundation creates impact through a continuum of education, prevention, and direct support designed to strengthen families and support the “whole” child.



Stronger families, safer environments, and holistic support for the whole child—helping prevent and mitigate child and family crises.

These are not just words on a page. They are the principles that guide every decision we make and every family we serve.





OUR PROGRAMS

What We Do:

At **CMSF**, everything we do is centered on one belief: no family should face a child welfare crisis alone. Through three pillars of service, we meet families where they are: guiding them through crises, educating communities before crisis begins, and building spaces where everyone feels safe, seen, and supported.

DIRECT FAMILY SERVICES

EDUCATION & COMMUNITY AWARENESS

SAFE SPACES



PILLAR 1:

DIRECT FAMILY SERVICES



We offer families practical guidance, support, and advocacy when they are facing a child welfare crisis. Our team works directly with families navigating CPS cases, domestic violence, child abuse, difficult divorce and custody disputes, and parent-teen conflict always with the whole child at the center. We stand beside families in interactions with CPS, family attorneys, and other organizations, ensuring they have a knowledgeable and compassionate voice in their corner. Critically, we go beyond navigation.

We conduct in-depth analyses of CPS cases to ensure that policies, procedures, and family rights were properly upheld. We document our findings in detailed reports that families can use for CPS appeals, court hearings, and consultations with their attorneys, giving them the information and knowledge they need to advocate for themselves with confidence. Another cornerstone of our direct services is our Parenting / Co-Parenting Strategies Program, a fully customized program built around the unique dynamics, culture, and background of each family we serve. Whether a family is navigating a child welfare crisis, surviving domestic violence, managing high-conflict co-parenting, working through parent-teen challenges, or simply wanting to strengthen their foundation, this program is designed specifically for them. We listen deeply, then co-create practical, lasting strategies that are relevant to their real life and rooted in who they are.

Each family receives individualized guidance tailored to their unique circumstances, culture, and needs. In addition to formal services, CMSF provides guidance, support, and direction to individuals seeking clarity, ensuring no one leaves without help.



PILLAR 2:

EDUCATION & COMMUNITY AWARENESS

COMMUNITY EVENTS



364
PEOPLE
INDIVIDUAL
REACHED

8
COMMUNITY
EVENTS

DIGITAL EDUCATION

138
EDUCATIONAL
SOCIAL MEDIA
POSTS

63,292
DIGITAL REACH
VIEWS

126
SHARES

192
SAVES



Training and workshop initiatives were developed in 2025, laying the foundation for expanded community education programming moving forward.

We provide workshops, training sessions, and community outreach on key topics including child welfare, domestic violence, mental health, parenting, navigating the CPS system, and many more. We partner with institutions such as schools, daycare centers, therapists, and other nonprofits that work directly with children and families to ensure our trainings are impactful, relevant, and responsive to real community needs. Through our social media platforms, we extend our educational reach even further, delivering critical child welfare information directly into the hands of families who need it most through educational reels, posts, and shareable content.



PILLAR 3:

SAFE SPACES IMPACT HIGHLIGHTS

Through SAFE Spaces, youth and families are reminded they are not alone, building connection, resilience, and support across communities locally and globally.

SAFE SPACES

is the community heart of **CMSF**, a pillar dedicated to building bridges of support and offering a community-focused environment where families and youth can share their experiences and grow together. These welcoming, facilitated spaces are designed to encourage learning, open dialogue, connection, and shared reflection around issues impacting children and families. The goal of every **SAFE Space** is simple: to create an environment where children, teens, young adults, and families feel heard, supported, and never alone, fostering open communication, resilience, and a true sense of community.

2023



2024



2025



Every number in this section represents a family that trusted us with their hardest moment.

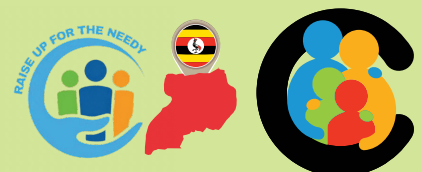


SAFE SPACES ACROSS THE GLOBE “COMMUNITY VOICE”



“Our children found a safe, nurturing space to learn empathy, kindness, and confidence while building a stronger sense of community.”

— Joshua Balongoire
Founder & Director,
Raise Up for the Needy (Uganda)



A FAMILY'S STORY

THE HUMAN SIDE OF OUR WORK

At **Color me SAFE Foundation**, we believe every family deserves to be seen, heard, and supported, not just through one challenge, but through all of them. The story below is real. The courage it took to ask for help is real. And the change that followed is real. Details have been kept general to protect the privacy of the family, but their words are entirely their own.

//

*Their work truly changes lives,
and mine is one of them...*

— CMSF Mother

//

I have been associated with **Color me SAFE Foundation** for over two years now, and throughout this journey, they have been nothing short of kind, supportive, and incredibly helpful. During one of the most challenging phases of my life, **CMSF** stood beside me with compassion, guidance, and unwavering encouragement.

I completed the comprehensive Parenting Strategies course with Britany through **CMSF**, and it has truly made a meaningful difference in my life. The tools and approaches I learned have helped me navigate my current circumstances with greater clarity, strength, and confidence. More importantly, the parenting strategies I gained have positively impacted my relationship with my minor child. I now approach situations with more patience, understanding, and structure, which has created a healthier and more stable environment for both of us.



Gauthami from **CMSF** has been more than just a support person, she has been a pillar of strength. Her constant motivation, empathy, and steady encouragement have meant more to me than words can fully express. At times when I felt overwhelmed, her reassurance and belief in me helped me regain confidence and move forward with courage.

I am deeply grateful to **Color me SAFE Foundation** for their continued support, compassion, and dedication. Their work truly changes lives, and mine is one of them.

Color me SAFE Foundation has also supported me through my CPS appeals case. Navigating such a complex and emotionally draining process on my own would have been extremely difficult. Knowing that I had the guidance and backing of **CMSF**, especially Gauthami, gave me the confidence to stand up for myself and face these challenges with strength.

With sincere gratitude,
CMSF Mother

**EVERY FAMILY WE SERVE HAS
A STORY. WE ARE HONORED
TO BE PART OF IT.**



NEW THIS YEAR



In 2025, **CMSF** expanded its impact in meaningful ways. We introduced a new layer of support by establishing access to legal consultations for families navigating crises, helping reduce financial barriers during critical moments. This addition reflects our commitment to providing practical, responsive solutions that meet families where they

Our **SAFE Spaces** initiative continued to grow in both reach and depth, expanding across multiple cities in Texas with six new cities added and, for the first time, internationally. Through a **CMSF**-facilitated model, Ask Auntie was implemented in Uganda, reinforcing that the need for safe, prevention-focused spaces extends beyond borders.

We also strengthened our presence within the community through increased outreach and tabling efforts, connecting directly with families and sharing resources before challenges escalate. At the same time, **CMSF** continued to grow its volunteer base, welcoming four new, trained facilitators, two high school ambassadors for Ask Auntie, and several dedicated volunteers supporting community outreach and educational content. These individuals play an essential role in expanding our reach, assisting with tabling events, and contributing to the development of educational reels that bring awareness directly to families through digital platforms.

We also laid the foundation for expanded Community Education & Awareness programming. Building on our outreach efforts, **CMSF** is developing a range of seminars, webinars, trainings, and workshops designed to bring critical education and awareness directly to the community. These initiatives will be delivered through intentional collaborations and partnerships with organizations and professionals working closely with children and families. In Spring 2026, **CMSF** will host its inaugural community workshop, with several additional programs already in development, marking a significant step toward expanding accessible, prevention-focused education for the communities we serve.

These steps represent more than growth. They reflect a continued commitment to building sustainable, accessible, and community-centered systems of support for families.

Growth is not accidental. Every step forward reflects intentional decisions to better support families and strengthen the communities around them.



OUR PEOPLE

Color me SAFE Foundation is powered by people, individuals who bring their time, expertise, and compassion to strengthen families and communities.

Our work is driven by a collaborative structure that includes our Board of Directors, trained facilitators, volunteers, and community advocates. Each plays a vital role in advancing our mission, whether through ongoing leadership or meaningful contributions at key moments throughout the year.

OUR BOARD OF DIRECTORS

Our Board of Directors provides strategic guidance and oversight, ensuring our work remains grounded, accountable, and aligned with our mission.



Gauthami Vemula-Queijo
Chair



Phylissia Clark
Secretary



Connie Zeender
Treasurer



Shannon Ng
Board Member



Eric D. Cline
Advisory



DIRECT FAMILY SERVICES TEAM & INTERNAL OPERATIONS

Our team who works directly with families on providing guidance, consultations, parenting/coparenting strategies and internal operations.



Gauthami Vemula-Queijo



Britany Myers, LCSW



Karen Ricks, LCSW



Sricharan Navuluri

OUR DEDICATED VOLUNTEERS

Volunteers supported **CMSF** in a variety of ways, from facilitating **SAFE Spaces** and assisting with outreach and tabling events, to contributing creative expertise through educational content and social media. Their contributions also extended to developing resources, including a children's coloring book shared with communities locally and globally. We were especially proud to expand youth leadership through our Ask Auntie High School Ambassadors, who helped amplify the mission of **SAFE Spaces** within their schools and communities. Our organization continues to grow, not only in size, but in the depth of engagement, diversity of perspectives, and commitment of those who choose to be part of this work.





Saranya Kari
Volunteer Intern



Monica Govind, LPC
Small Group
Therapy Facilitator



Priya Varada
Lead Initiatives
Advocate



Samhitha Murthy
Ask Auntie
Facilitator



Aruna Devi
Ask Auntie
Facilitator



Priti Ahuja
Ask Auntie and
Hey SAATHI
Facilitator



Prajakta Pardikar
Hey SAATHI
Facilitator



Bhavini Parekh
Hey SAATHI
Facilitator



Radha Patel
Ask Auntie
Facilitator



Gauri Sharma
Hey SAATHI
Facilitator



Hema Ghuznavi
Hey SAATHI
Facilitator



Shruti Sharma
Hey SAATHI
Facilitator



Mushfique Chowdhury
Social Media
Digital Education



Siya Atit
Creative
Content



Aman Roy
Ask Auntie
High School
Ambassador



Anika Patel
Ask Auntie
High School
Ambassador



Veera Gollapalli
Operations &
Logistics Support



OUR COMMUNITY PARTNERS

At **CMSF**, we recognize that meaningful impact is never created in isolation. It is built through partnership, trust, and a shared commitment to strengthening families and communities.

We are deeply grateful for the individuals and nonprofit organizations that have chosen to walk alongside us in this work. Each partnership reflects a shared belief that every child and every family deserve support, understanding, and safety.

These collaborations allow us to expand our reach, deepen our impact, and meet families where they are. Whether through hosting **SAFE Spaces**, contributing expertise to educational initiatives, supporting outreach efforts, or helping us bring resources directly into the community, our partners play an essential role in amplifying our mission.

Together, we are building a collective movement rooted in compassion, awareness, and action, one that recognizes protecting children and supporting families is a shared responsibility.

We extend our sincere gratitude to every partner who has contributed their time, voice, and trust to this work. Because when we come together, we help create safer, stronger futures for children everywhere.



A community-powered organization, built on compassion and collective action.



FINANCIAL STEWARDSHIP

At **Color me SAFE Foundation**, we are grateful to have ended 2025 in a strong financial position thanks to the many individuals, organizations, and volunteers who believe in our mission and continue to help bring it to life. Through thoughtful stewardship, a lean volunteer-driven structure, and growing community support, our fundraising growth significantly exceeded our operational spending needs in 2025, allowing us to continue expanding our work and deepen our impact heading into 2026.

FUNDRAISING

During the year, we raised a total of **\$75,049**, representing a **142% increase** from 2024, thanks to the generous support of our donors, partners, and broader community.

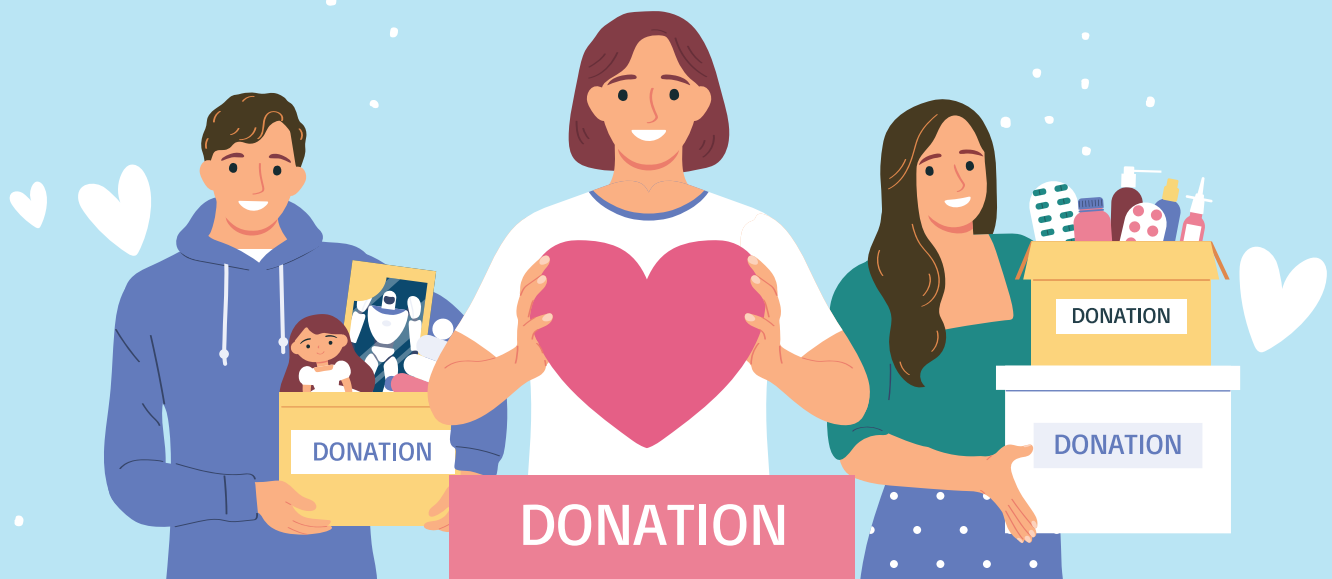


At **Color me SAFE Foundation**, every dollar received directly contributes to expanding our programs, strengthening community outreach, and expanding access to prevention-focused education, advocacy, and family support services. Our 2025 funding came from individual donors, grants, community partnerships, and grassroots fundraising efforts, allowing us to sustain and significantly expand our impact.

Our donors and partners' belief in our mission and commitment to child welfare and family advocacy reinforces the power of collective giving in transforming lives. Every contribution, whether large or small, helps create lasting change, and we are honored to have such a dedicated community standing alongside us.



THE POWER OF INDIVIDUAL GIVING



At **Color me SAFE Foundation**, we are deeply grateful for the generous individuals whose support continues to fuel our mission. Their contributions play a critical role in sustaining our programs, expanding outreach efforts, and helping families access guidance, education, and support during some of their most difficult moments.

\$33,089

In 2025, we received **\$33,089** in individual donations, including **\$4,935** raised through **North Texas Giving Day**, our primary grassroots fundraising campaign of the year.

GRANTS



In 2025, we were honored to see our work recognized through grants from organizations that share our commitment to strengthening families and supporting child welfare initiatives. During the year, we received \$41,150 in grant funding, which allowed us to expand our outreach efforts, strengthen educational initiatives, and continue providing critical support services to families in need.

We are especially grateful for:

\$25,000

Grant from Capital Group supporting our operations and organizational growth

\$16,150

In additional foundation and community grant funding

IN-KIND

Marketing and outreach support from community partners, including donated promotional materials



COMMUNITY SUPPORT

At Color me **SAFE** Foundation, we believe deeply in the power of community-driven support. Throughout 2025, individuals, businesses, and community organizations contributed in meaningful ways that helped expand our reach and strengthen our impact.

This support included financial contributions, shared event proceeds, donated resources, discounted meeting spaces, in-kind donations, and volunteer-driven efforts that allowed us to continue operating with a lean and highly mission-focused structure.

Every act of support, whether financial, operational, or volunteer-based, played a meaningful role in helping us serve more families and strengthen our community presence.



USE OF RESOURCES

In 2025, **Color me SAFE Foundation** continued operating with a lean, volunteer-driven structure, allowing us to maximize the impact of every dollar raised while maintaining low operational overhead. The majority of our work continued to be delivered through dedicated volunteers, supported by a small number of specialized contractors and mission-aligned partners.

During the year, we invested approximately \$20,779 directly into mission delivery, outreach, fundraising infrastructure, educational initiatives, and operational support needed to sustain and expand our programs.

Resources were directed across the following key areas:

\$3,426

Supporting direct family services for families navigating child welfare, parenting, and advocacy-related challenges

\$2,544

Supporting Education & Community Awareness initiatives, including outreach events, educational content, and awareness campaigns

\$1,050

Supporting Community Healing & **SAFE Spaces** initiatives focused on connection, support and community engagement

\$13,225

Supporting Organizational Outreach & Development efforts, including fundraising, community engagement, outreach infrastructure, volunteer support, strategic growth initiatives, and organizational sustainability

\$534

Supporting operational and shared infrastructure expenses necessary to sustain ongoing program delivery

OUR FINANCIAL POSITION

We ended 2025 with \$84,500 in available cash resources, positioning **Color me SAFE Foundation** to continue expanding our mission and deepen our impact in 2026. This financial position reflects not only the generosity of our supporters, but also our commitment to operating responsibly, strategically, and with long-term sustainability in mind as we continue building accessible, prevention-focused support systems for children and families.





LOOKING FORWARD 2026 AND BEYOND

As we look ahead to 2026 and beyond, **Color me SAFE Foundation** is focused on strengthening, stabilizing, and growing the programs already making an impact. Our priority is not to launch new services, but to deepen the work we have built across our three pillars: Direct Family Services, Education & Community Awareness, and **SAFE Spaces**. Each pillar reflects our commitment to supporting the whole child, strengthening families, and preventing crises before they escalate.



In the year ahead, we will continue expanding our **SAFE Spaces** by reaching more communities, increasing awareness, growing participation in existing circles, and training more volunteers to help sustain these spaces with care and consistency. We also plan to build on the official launch of our Education & Community Awareness pillar by offering more webinars, in-person seminars, trainings, and meaningful collaborations that equip families, professionals, and communities with practical knowledge and support.

We will also focus on reaching more families through our Direct Family Services pillar by increasing visibility, outreach, and access to the guidance families need during difficult moments. As more families learn about **CMSF** our goal is to ensure they know where to turn before a crisis escalates and that they are met with support, advocacy, and practical solutions.

To make this growth possible, **CMSF** will need greater resources, sustainable funding, stronger marketing, and a small dedicated staff to support the organization as a whole. With continued community support, we believe 2026 can be a year of deeper impact, stronger systems, and more families finding the help, hope, and advocacy they deserve.





colormesafefoundation.org



Join our mission by contributing to ensure families remain united and **SAFE**. Your support matters!

